

#### ● FEATURES

- COMPACT DESIGN
- HIGH ACCURACY
- EXCELLENT FOR HIGH DENSITY SURFACE MOUNTING



#### ● SPECIFICATIONS

PARAMETER	VALUE
FREQUENCY RANGE	12.00 MHz to 55.00 MHz
MODE OF OSCILLATION	FUNDAMENTAL ONLY
FREQUENCY TOLERANCE AT 25°C	±50 PPM MAXIMUM (±10, AND ±20 PPM AVAILABLE)
FREQUENCY STABILITY OVER TEMPERATURE	±50 PPM MAXIMUM (±10, AND ±20 PPM AVAILABLE)
OPERATING TEMPERATURE RANGE	-10°C TO +60°C STANDARD <sup>1</sup> -40°C TO +85°C EXTENDED <sup>1</sup>
STORAGE TEMPERATURE RANGE	-40°C TO +85°C
AGING	±3 PPM PER YEAR MAXIMUM
LOAD CAPACITANCE	8 pF to 32 pF OR SERIES
EQUIVALENT SERIES RESISTANCE	SEE TABLE 1
SHUNT CAPACITANCE	7 pF MAXIMUM
DRIVE LEVEL	500 μW MAXIMUM
SHOCK RESISTANCE	±5 PPM MAXIMUM 75 cm DROP TEST IN 3 AXES ONTO A HARD SURFACE
REFLOW CONDITIONS	260°C ±5°C FOR 10s MAXIMUM



<sup>1</sup> NOTE: NOT ALL STABILITIES ARE AVAILABLE FOR ALL OPERATING TEMPERATURE RANGES. CONTACT FACTORY FOR AVAILABILITY.

TABLE 1

FREQUENCY (MHz)	MODE	MAX ESR (OHMS)
16.000 TO 18.999	FUND	90
19.000 TO 24.999	FUND	80
25.000 TO 31.999	FUND	60
32.000 TO 50.000	FUND	50

**■ PART NUMBERING SYSTEM**

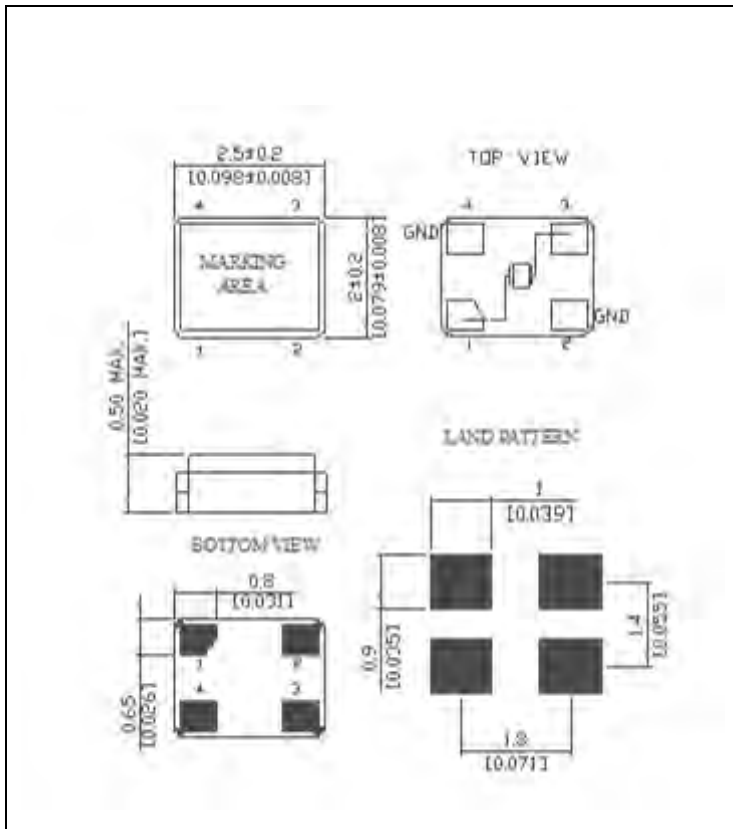
TYPE	FREQUENCY	LOAD CAPACITANCE	MODE	TOLERANCE/STABILITY (PPM/PPM)
R2520	IN MHZ	10 TO 32 pF FOR PARALLEL S FOR SERIES	Blank FOR < 24.576 MHz F FOR ≥ 24.576 MHz	Blank FOR MAXIMUM PPM/PPM Example: 1020, 2050

EXTENDED TEMPERATURE	TAPE & REEL
Blank FOR STANDARD EXT FOR EXTENDED	TR

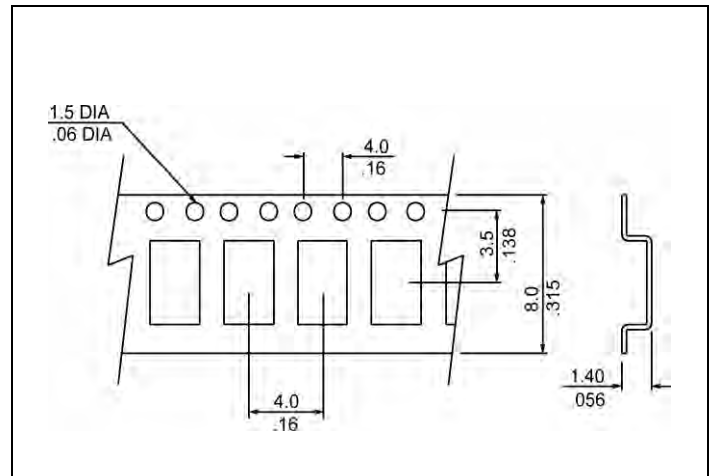
**EXAMPLE: R2520-20.000-10-2020-TR**

Surface Mount Crystal, 2.5 mm x 2.0 mm package, 20.000 MHz, 10 pF load, ±20 ppm Tolerance, ±20 ppm Stability over the Operating Temperature from -10°C to +60°C, Tape and Reel packaging

**● MECHANICAL SPECIFICATION**



**● CARRIER TAPE DIMENSIONS**



NOTE: REFER TO EIA-481 FOR DIMENSIONS

**● PACKAGING**

178 mm REEL DIAMETER  
8 mm TAPE WIDTH, 4 mm PITCH  
QUANTITY: 1000 PIECES PER REEL

IN ACCORDANCE WITH EIA-481